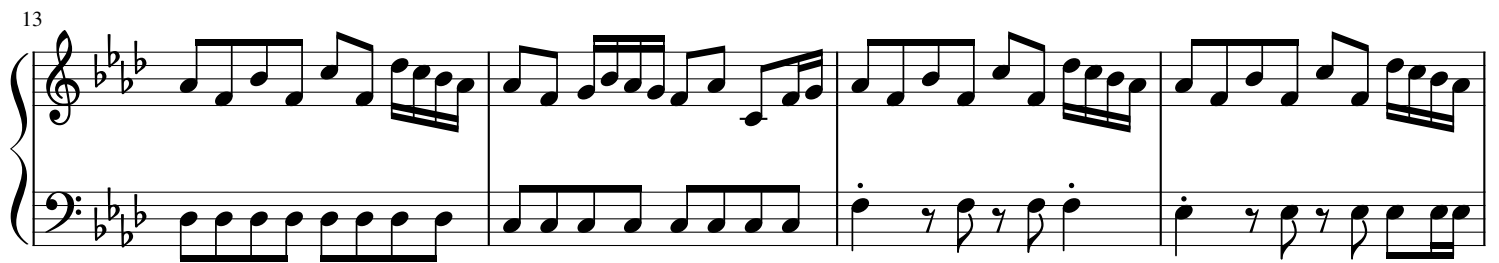
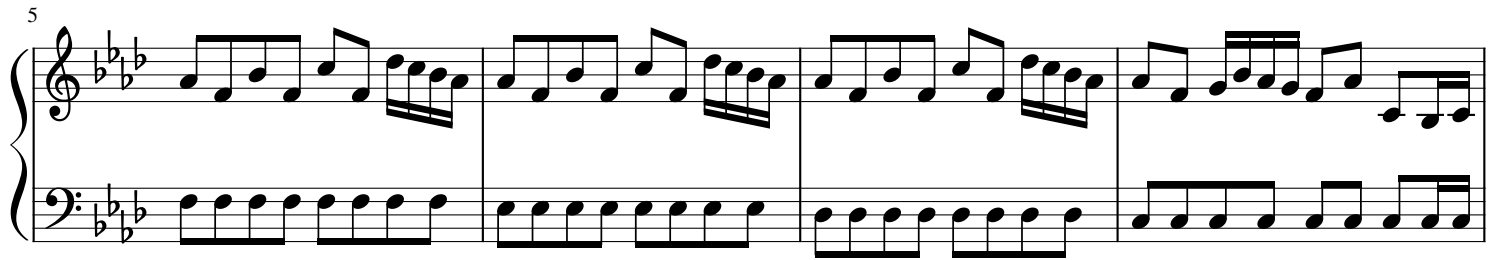


Seeking Truth

from "Ninja Gaiden"

More Yamasan, B. Hasake

arr. Mark Andrews



21

25

30 (Alt. Easier Key)

34

38

41

Measures 41-44. Treble clef: eighth and sixteenth notes. Bass clef: eighth-note accompaniment.

45

Measures 45-48. Treble clef: eighth and sixteenth notes. Bass clef: dotted quarter and eighth notes.

49

Measures 49-52. Treble clef: eighth and sixteenth notes. Bass clef: eighth-note accompaniment.

53

Measures 53-55. Treble clef: eighth and sixteenth notes. Bass clef: eighth-note accompaniment.

56

Measures 56-58. Treble clef: eighth and sixteenth notes. Bass clef: eighth-note accompaniment. Ends with a double bar line.